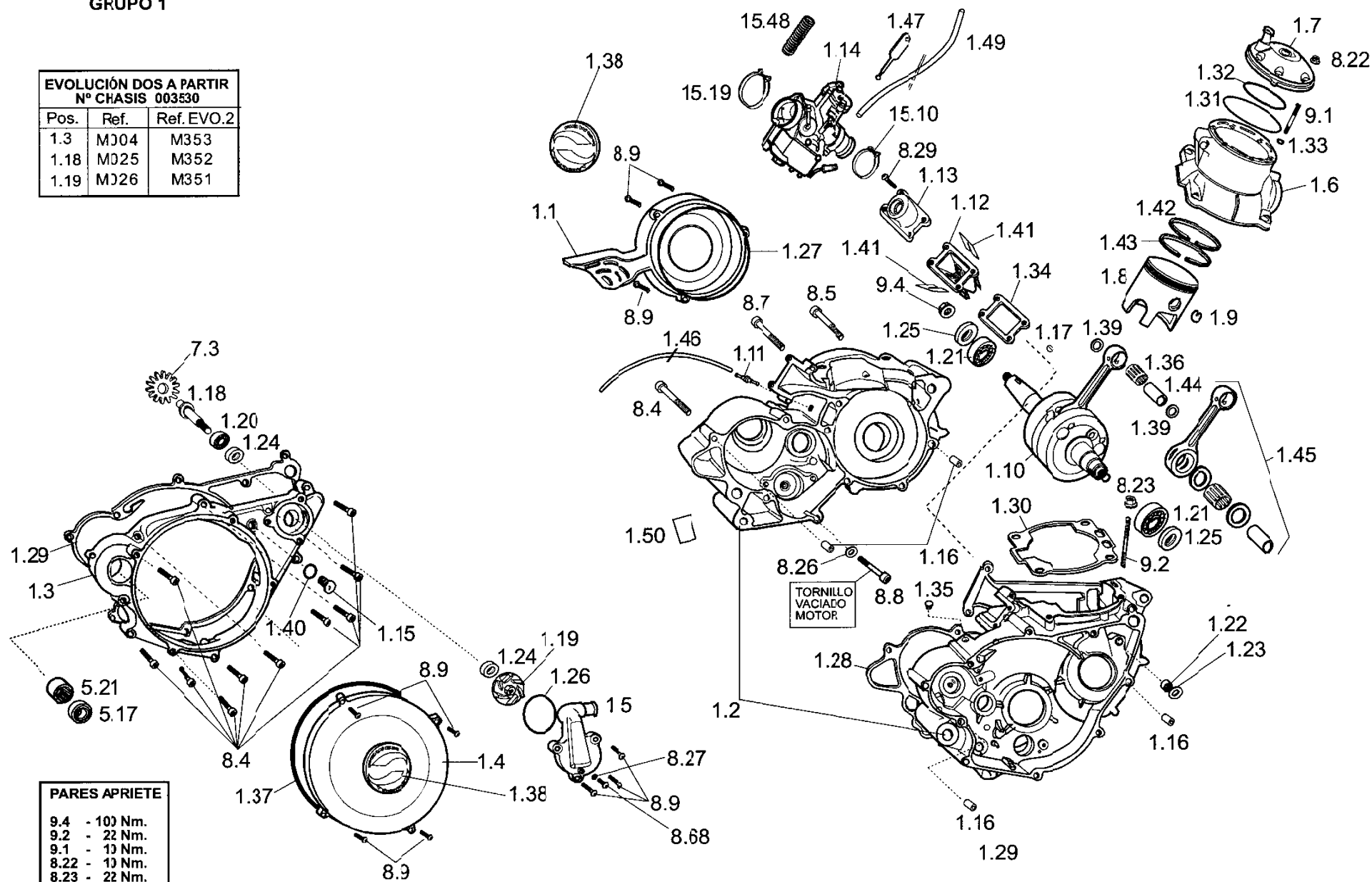


GRUPO 1

EVOLUCIÓN DOS A PARTIR Nº CHASIS 003530		
Pos.	Ref.	Ref. EVO.2
1.3	MJ04	M353
1.18	MJ25	M352
1.19	MJ26	M351



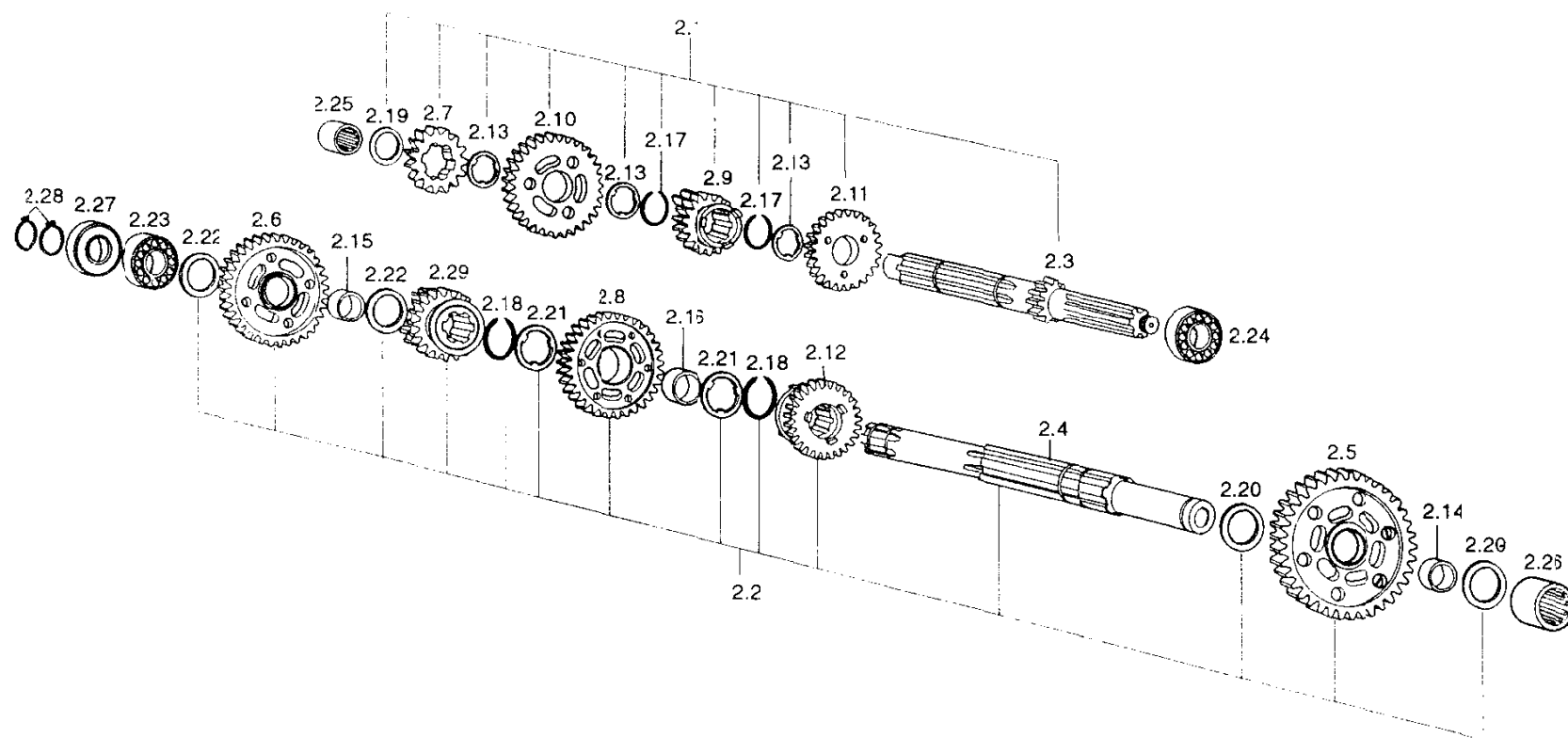


MOTOR

1

REFERENCIAS					ESPAÑOL	ENGLISH	FRANÇAIS
POS.	1.2	2.0	2.5	2.9			
1.1				M001	TAPA ENCENDIDO	IGNITION COVER	CARTER ALLUMAGE
1.2	M210	M210	M002	M002	CARTERS CENTRALES	CRANKCASES SET	GROUPE CARTERS CENTRAUX
1.3				M353	CARTER LATERAL DERECHO	BOTTOM CLUTCH COVER	CARTER LATERAL DROIT
1.4				M005	TAPETA EMBRAGUE	CLUTCH COVER	COUVERCLE EMBRAYAGE
1.5				M006	TAPA BOMBA AGUA	WATER PUMP COVER	COUVERCLE POMPE EAU
1.6	M214	M215	M007	M246	CILINDRO	CYLINDER	CYLINDRE
1.7	M216	M217	M008	M247	CULATA	CYLINDER HEAD	CULASSE
1.8	M212	M213	M009	M245	PISTON	PISTON	PISTON COMPLET
1.9	R218	R218	M013	M013	SERCLIP PISTON	PISTON CIRCLIP	CIRCLIPS PISTON
1.10	M211	M211	M014	M014	CIGUENAL COMPLETO	CRANK SHAFT ASSY	VILEBREQUIN COMPLET
1.11				M016	TUBO DEPRESOR CARTERS	CRANKCASE BREATHER	RENIFLAR CARTER CENTRAL
1.12				M018	CAJA DE LAMINAS COMPLETA	REEDS CASE	BOITE A CLAPETS
1.13				M019	TOBERA ADMISION	ADMISSION PIPE	PIPE ADMISSION
1.14				M020	CARBURADOR COMPLETO	CARBURETOR COMPLETE	CARBURATEUR COMPLET
1.15				M021	TAPON LLENADO ACEITE CARTER	CARTER FILTER TAP	BOUCHON REMPLISSAGE HUILE
1.16				M022	CASQUILLO CENTRADOR CARTER	DOUILLE CENTRAGE CARTER	DOUILLE CENTRAGE CARTER
1.17				M023	CHAVETA ENCENDIDO	WOODRUFF KEY	CLAVETTE DEMI LUNE VIL
1.18				M352	EJE BOMBA AGUA	WATERPUMP AXLE	AXE POMPE A EAU
1.19				M351	TURBINA BOMBA AGUA	WATERPUMP TURBINE	TURBINE DE POMPE A EAU
1.20				M027	COJINETE BOMBA AGUA 608 2RS	WATERPUMP BEARING	ROULEMENT BILLE POMPE EAU 608.2RS
1.21	M218	M218	M028	M028	COJINETE CIGUENAL 6206 C3	CRANKSHAFT BEARING	ROULEMENT BILLE VLO 6206.C3
1.22				M029	COJINETE AGUJAS BOMBA AGUA HK0808B	WATERPUMP NEEDLE BEARING	ROULEMENT AIGUILLE POMPE EAU
1.23				M030	ARANDELA BOMBA AGUA 8X16X1	WATERPUMP BUSH 8X16X1	RONDELLE BUTEE POMPE A EAU 8x16x1
1.24				M031	RETEN BOMBA AGUA	WATERPUMP SEAL	JOINT LEVRE POMPE A EAU 8x20x5DL
1.25	M219	M219	M032	M032	RETEN CIGUENAL	CRANKSHAFT SEAL	JOINT LEVRE VILLO 24x40x7DL
1.26				M033	JUNTA TORICA TAPA BOMBA AGUA	O-RING WATERPUMP COVER	JOINT TORIQUE COUVERCLE POMPE
1.27				M034	JUNTA TORICA TAPA ENCENDIDO	O-RING IGNITION COVER	JOINT TORIQUE COUVERCLE ALLUMAGE
1.28	M220	M220	M035	M035	JUNTA CARTER CENTRAL	CENTRAL CRANKCASE GASKET	JOINT CARTER CENTRAL
1.29				M036	JUNTA CARTER LATERAL	CLUTCH GASKET	JOINT CARTER LATERAL
1.30	M221	M221	M037	M037	JUNTA CILINDRO	CYLINDER GASKET	JOINT EMBASE CYLINDRE
1.31	M222	M222	M222	M038	JUNTA TORICA CULATA EXTERIOR	CYLINDER HEAD O-RING	JOINT TORIQUE CULASSE VITON
1.32	M223	M223	M223	M039	JUNTA TORICA CULATA INTERIOR	CYLINDER HEAD O-RING	JOINT TORIQUE CULASSE VITON
1.33				M040	JUNTA TORICA ESFARRAGO CULATA 5,7X1,9	CYLINDER HEAD O-RING BOLT 5,7X1,9	JOINT TORIQUE CYLINDRE 5,7x1,9
1.34				M041	JUNTA CAJA LAMINAS	REEDS CASE GASKET	JOINT BOITE CLAPET
1.35				M042	TAPON ACEITE CARTER CENTRAL	CRANKCASE OIL PLUG	BOUCHON CIRCUIT HUILE CARTER CENT
1.36	M241	M241	M043	M248	COJINETE AGUJAS PISTON KBK 18X22X24	PISTON NEEDLE BEARING	CAGE AIGUILLE PISTON KBK 18x22x24
1.37				M045	JUNTA TORICA 155X2 TAPA EMBRAGUE	O-RING 155x2	JOINT TORIQUE 155x2
1.38	C189	C190	C187	C188	ADHESIVO CARTER	THUMBS ENGINE STICKER	ADESIF RESINE
1.39		M354			ARANDELA ESPECIAL PISTON	GUDGEON PIN SHIMS	RONDELLE SPECIAL PISTON
1.40				M162	JUNTA TORICA TAPON ACEITE	O-RING	TORIQUE 10x2.5 BOUCHON HUILE
1.41				R022	JUEGO LAMINAS	REED VALVES	CLAPET RECHANGE
1.42			R011		ARO L	RING L	SEGMENT L
1.43	R213	R214	R012	R215	ARO RECTANGULAR	RING NORMAL	SEGMENT RECTANGULAIRE
1.44	R219	R220	R013	R221	BULON PISTON	PISTON PIN	AXE DE PISTON
1.45	R212	R212	R021	R021	KIT BIELA	CRANKSHAFT REPAIR KIT	KIT BIELLE
1.46				M017	TUBO DEPRESOR 3X5	CRANKCASE BREATHER PIPE	DURITE RENIFLAR 3X5
1.47				M015	TIRADOR STARTER	CHOKE LEVER TAG	LEVIER STARTER
1.49				M012	TUBO GASOLINA CARBURADOR	RUBBER TUB PETROL	DURITE ESSENCE CARBURATEUR
1.48				M044	MUELLE CARBURADOR	SPRING CARBURETOR	RESSORT CARBURATEUR
1.50				M079	ADESIVO OIL OUT	STICKER OIL OUT	ADESIF OIL OUT

GRUPO 2



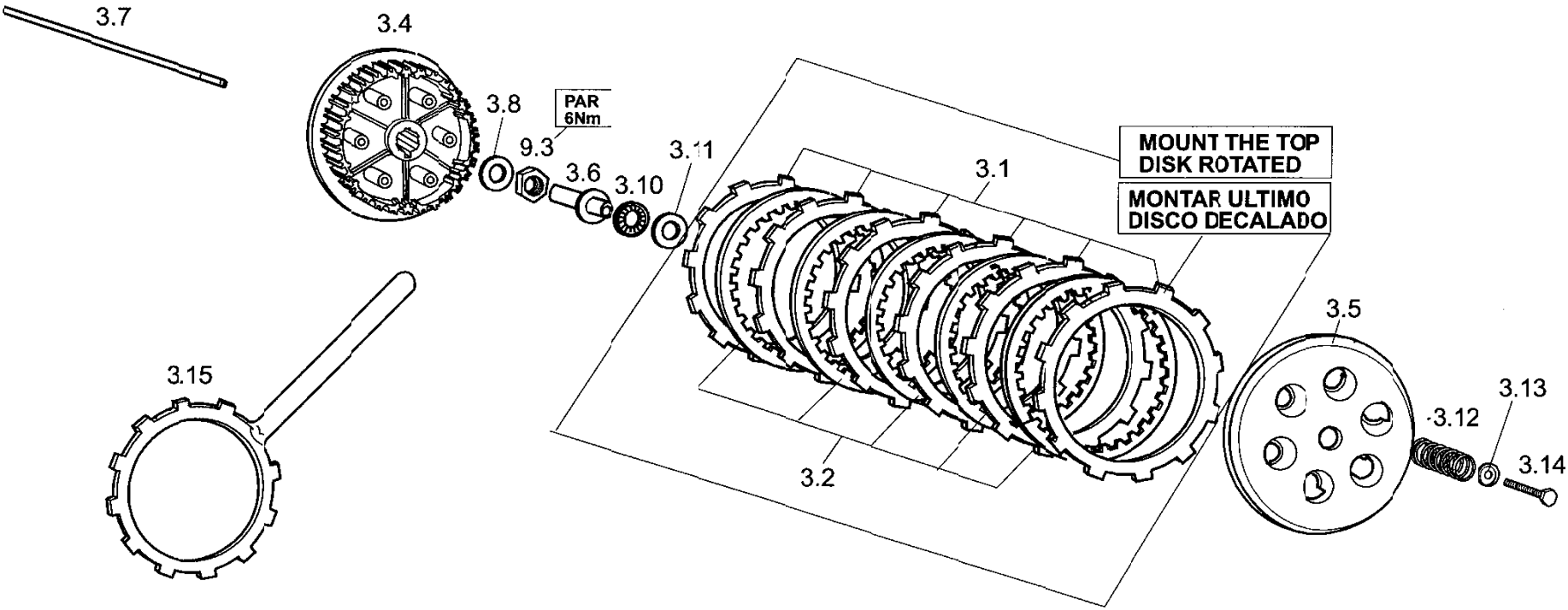


CAJA DE CAMBIOS

2

[illegible]

GRUPO 3



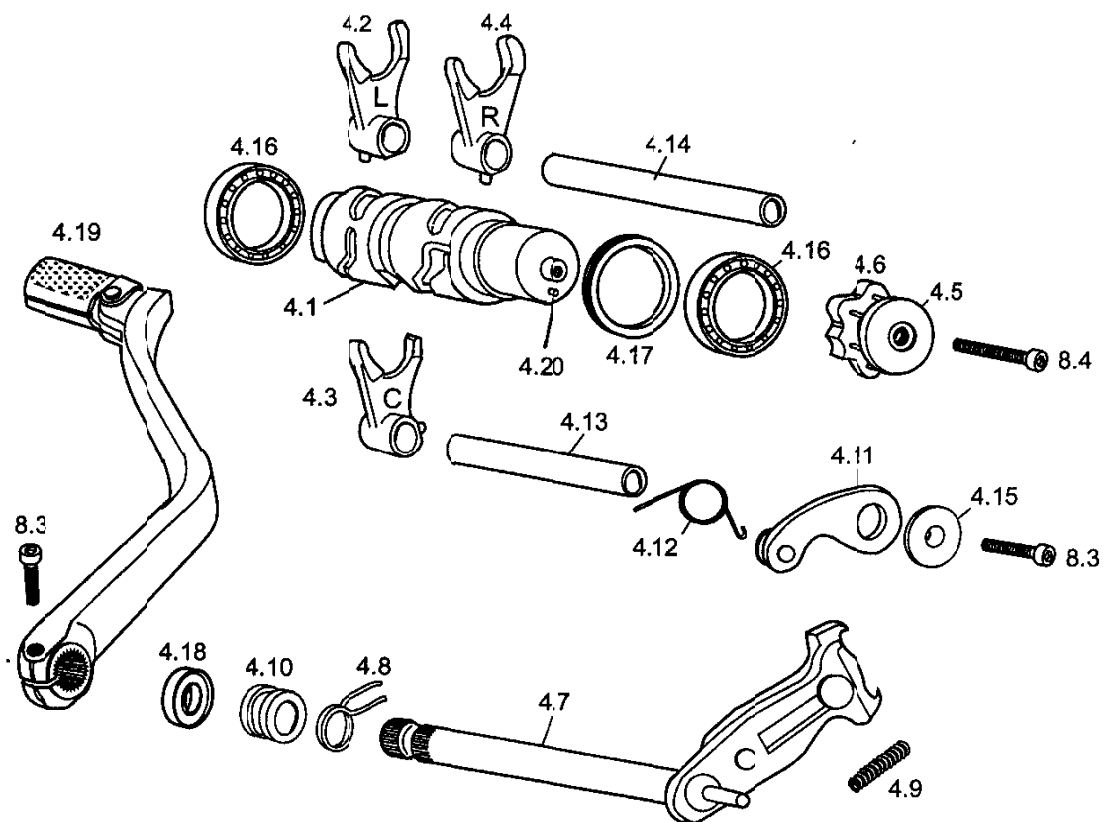


EMBRAGUE

3

[illegible]

GRUPO 4



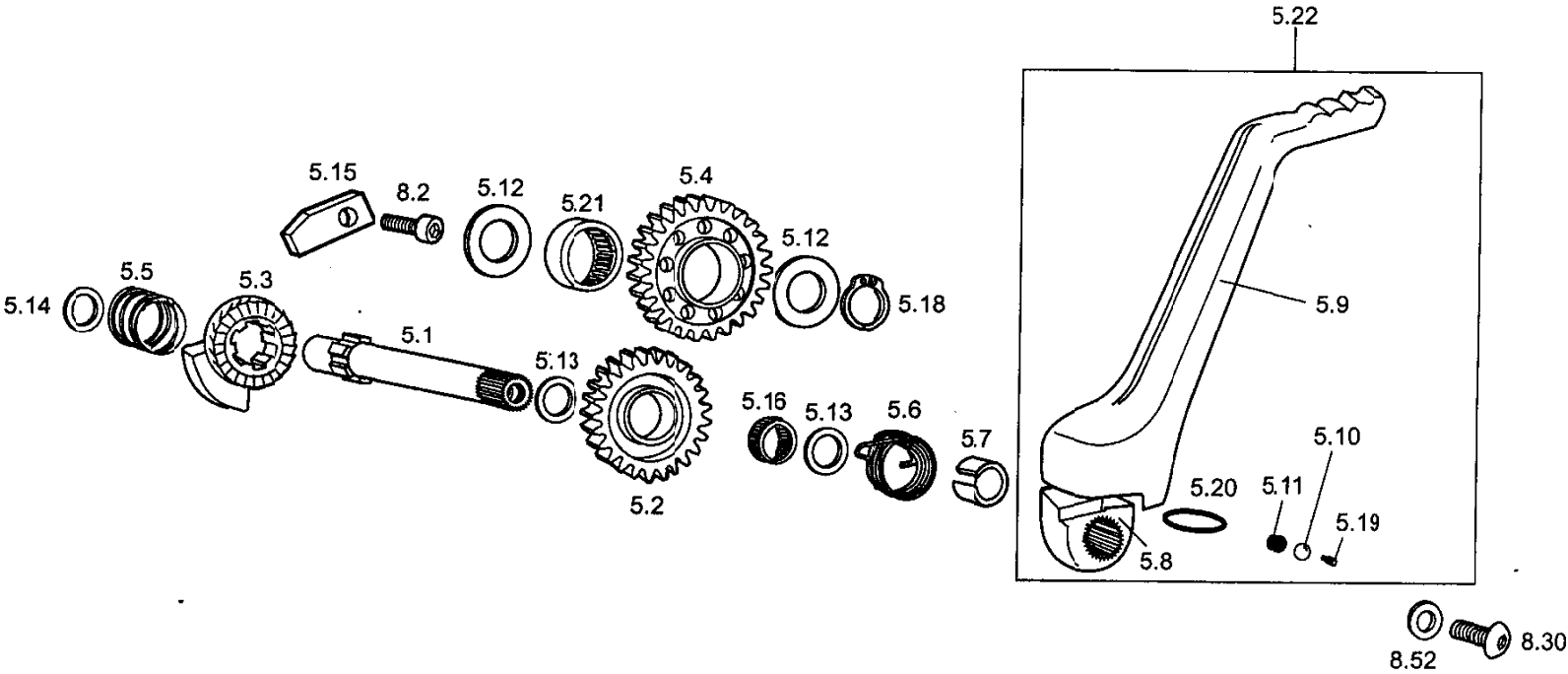


SELECTOR CAMBIO

4

[illegible]

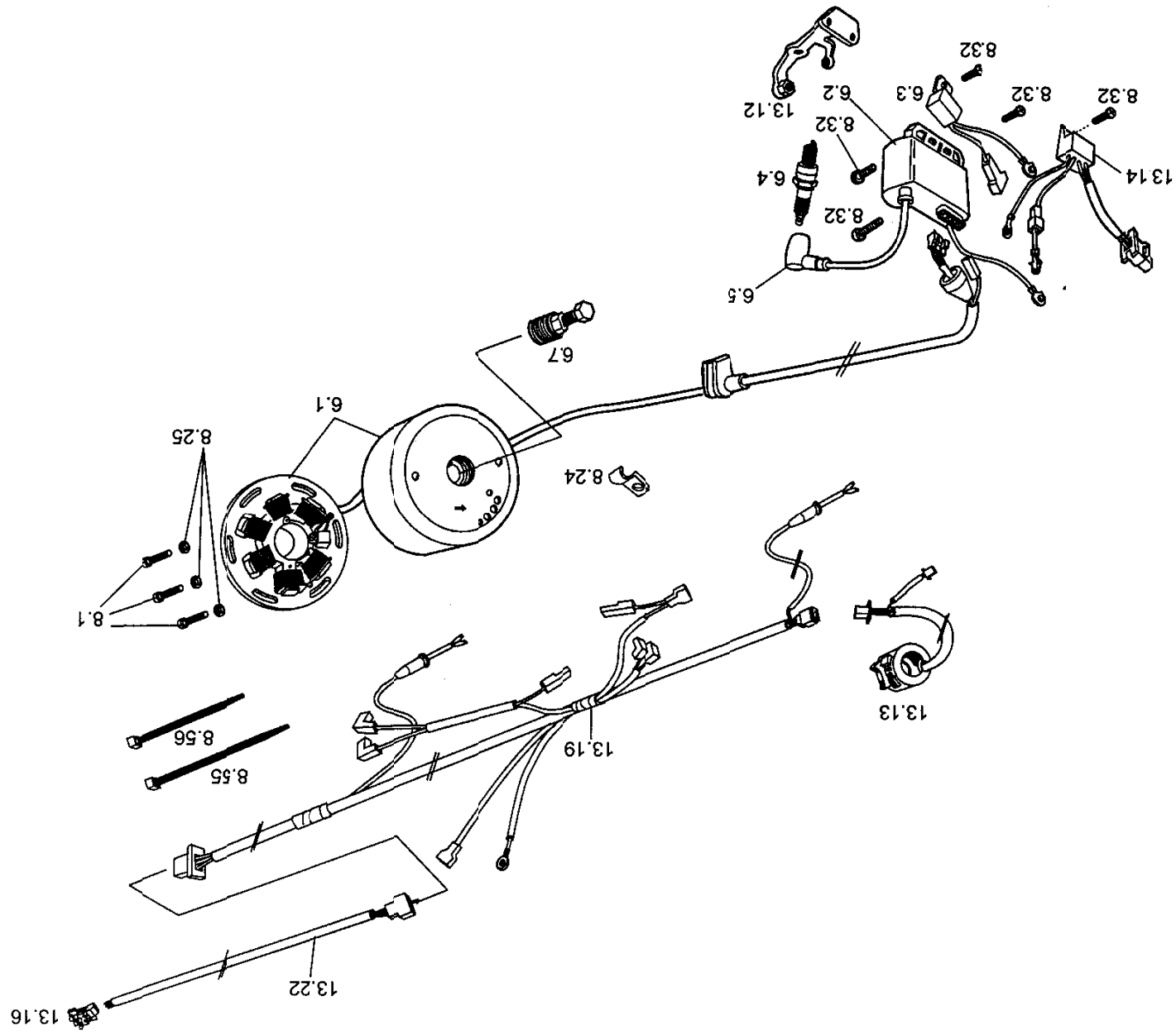
GRUPO 5





SISTEMA DE PUESTA EN MARCHA 5

[illegible]

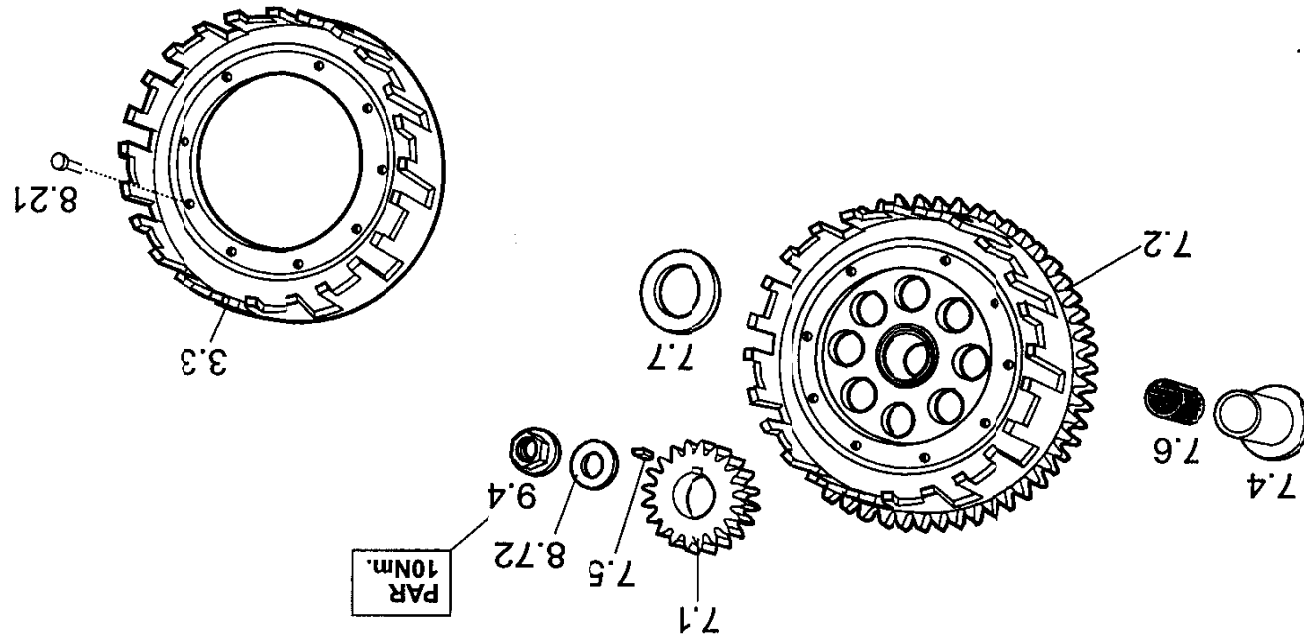




ENCENDIDO

6

[illegible]





TRANSMISION PRIMARIA

7

[illegible]



TORNILLERIA ESTÁNDAR 8

REFERENCIAS					ESPAÑOL	ENGLISH	FRANÇAIS
POS.	1.2	2.0	2.5	2.9			
8.1				M250	TORNILLO M5X16 DIN 912	SCREW CHC 5x16	VIS CHC 5x16
8.2				M251	TORNILLO M6X16 DIN 912	SCREW CHC 6x16	VIS CHC 6x16
8.3				M252	TORNILLO M6X20 DIN 912	SCREW CHC 6x20	VIS CHC 6x20
8.4				M253	TORNILLO M6X30 DIN 912	SCREW CHC 6x30	VIS CHC 6x30
8.5				M254	TORNILLO M6X55 DIN 912	SCREW CHC 6x55	VIS CHC 6x55
8.7				M256	TORNILLO M6X45 DIN 912	SCREW CHC 6x45	VIS CHC 6x45
8.8				M257	TORNILLO M6X60 DIN 912	SCREW CHC 6x60	VIS CHC 6x60
8.9				M258	TORNILLO M5X16 ULS	SCREW CHC 5x16	VIS BHC 5x16
8.10				M259	TORNILLO M10X50 DIN 912	SCREW CHC 10x50	VIS CHC 10x50
8.11				M250	TORNILLO M8X12 DIN 912	SCREW CHC 8x12	VIS CHC 8x12
8.13				M252	TORNILLO M8X30 DIN 912	SCREW CHC 8x30	VIS CHC 8x30
8.14				M253	TORNILLO M8X40 DIN 912	SCREW CHC 8x40	VIS CHC 8x40
8.15				M254	TORNILLO M8X45 DIN 912	SCREW CHC 8x45	VIS CHC 8x45
8.16				M255	TORNILLO M8X60 DIN 912	SCREW CHC 8x60	VIS CHC 8x60
8.17				M256	TORNILLO M8X80 DIN 912	SCREW CHC 8x80	VIS CHC 8x80
8.18				M257	TORNILLO M4X16 DIN 912	SCREW VIS CHC 4x16	VIS CHC 4x16
8.21				M270	REMACHE 4X10	RIVET 4X10	RIVET 4X10
8.22				M271	TUERCA M6 CON VALONA DIN 6923B	COLLAR HEX NUT M6	ECROU EMBASE x6
8.23				M272	TUERCA M8 CON VALONA DIN 6923B	COLLAR HEX NUT M8	ECROU EMBASE x8
8.24				M273	BRIDA NORMA BSL1X8	CAVALIER NORMA BSL 1x8	CAVALIER NORMA BSL x8
8.25				M275	ARANDELA 5 DIN125 A	WASHER x5	RONDELLE x5
8.26				M276	ARANDELA 6 ALUMINIO	GASKET RING x6	RONDELLE ALU M 6
8.27				M277	ARANDELA 5 ALUMINIO	GASKET RING x5	RONDELLE ALU M 5
8.28				M278	TORNILLO M5X10 ULS	SCREW BHC 5x10	BHC 5x10
8.29				M279	TORNILLO M6X20 ULS	SCREW BHC 6x20	VIS BHC 6x20
8.30				M290	TORNILLO M8X16 ULS	SCREW BHC 8x16	VIS BHC 8x16
8.31				M291	TORNILLO M8X12 ULS	SCREW BHC 8x12	VIS BHC 8x12
8.32				M292	TORNILLO M6X10 ULS	SCREW BHC 6x10	VIS BHC 6x10
8.33				M293	TORNILLO M6X16 ULS	SCREW BHC 6x16	VIS BHC 6x16
8.34				M294	TORNILLO M6X25 ULS	SCREW BHC 6x25	VIS BHC 6x25
8.37				M300	TORNILLO M8X35 DIN 7991	SCREW FHC 8x35	VIS FHC 8x35
8.38				M301	TORNILLO M8X20 DIN 7991	SCREW FHC 8x20	VIS FHC 8x20
8.39				M302	TORNILLO M5X12 DIN 933	SCREW HEXAG 5x12	VIS HEXAG 5x12
8.40				M303	TORNILLO M8X25 DIN 933	SCREW HEXAG 8x25	VIS HEXAG 8x25
8.41				M304	TUERCA NYLSTOP M10	NUT NYLSTOP M10	ECROU NYLSTOP M10
8.42				M305	TUERCA NYLSTOP M8	NUT NYLSTOP M8	ECROU NYLSTOP M8
8.43				M306	TUERCA NYLSTOP M6	NUT NYLSTOP M6	ECROU NYLSTOP M6
8.44				M307	TUERCA NYLSTOP M4	NUT NYLSTOP M4	ECROU NYLSTOP M4
8.45				M308	TUERCA CLIP M6	NUT CLIP M6	ECROU CLIP M6
8.46				M310	TUERCA REBAJADA M14X150	NUT PLAT M14 x 150	ECROU PLAT M14x150
8.47				M314	ARANDELA X 17 DIN 125 E	WASHER x17	RONDELLE x17
8.48				M315	ARANDELA X 10 DIN 125 E	WASHER x10	RONDELLE x10
8.49				M316	ARANDELA X 8 DIN 125 E	WASHER x8	RONDELLE x8
8.50				M317	ARANDELA X 6 DIN 125 E	WASHER x6	RONDELLE x6
8.51				M318	ARANDELA 4X12X1 DIN 9021	WASHER 4x12	RONDELLE 4x12
8.52				M319	ARANDELA 8X18X1.5 CONICA DIN	WASHER 8x18x1.5	RONDELLE 8x18x1.5
8.53				M320	ARANDELA 10X30	WASHER 10x30	RONDELLE 10x30
8.54				M321	ARANDELA 6X18X1.5 DIN 9021	WASHER 6x18	RONDELLE 6x18
8.55				M330	BRIDA 178X4.8	COLLIER 178x4.8	COLLIER 178x4.8
8.56				M331	BRIDA 100X2.5	COLLIER 80x2.5	COLLIER 100x2.5
8.57				M335	TORNILLO CHAPA 3.9X16	SCREW TOLE 3.9x16	VIS TOLE 3.9x16

8.58			M336	TORNILLO CHAPA 2.9X9.5 RADIADOR	SCREW TOLE 2.9x9.5	VIS TOLE 2.9x9.5
8.60			M341	REMACHE 4.8X16 ALA ANCHA	RIVET 4.8x16	RIVET 4.8X16
8.63			M309	TUERCA M6	M6 NUT	ECROU M6
8.64			M311	TUERCA M5	M5 NUT	ECROU M5
8.65			M287	TORNILLO CORONA M6X22 ULS	SCREW BHC 8X22	VIS BHC 8X22
8.66			M249	TORNILLO M6X20 DIN 6912	SCREW CHC 6X20	VIS CHC TETE BASSE 6X20
8.67			M345	TORNILLO CARROCERIA M6X12		VIS BHC 6X12 CAROSSERIE
8.68			M288	TORNILLO 5X6 ULS	SCREW BHC 5X6	VIS BHC 5X5
8.69			M344	TORNILLO M8X16 DIN 6912		VIS CHC 8X16 TETE BASSE
8.70			M289	TORNILLO M6X12 ULS		VIS BHC M6X12
8.71			M343	TORNILLO M6X35 ULS		VIS BHC 6X35
8.72			M206	ARANDELA CONICA 14.2X25X1.5	SPRING WASHER	RONDELLE BELLEVILLE 14.2X28X1.5
8.73			M342	TORNILLO CHAPA 3.5X9.5		VIS TOLE 3.5X9.5
8.74			M274	ARANDELA DENTADA 6 DIN 67985		RONDELLE GROSVET X6 DIN 67985

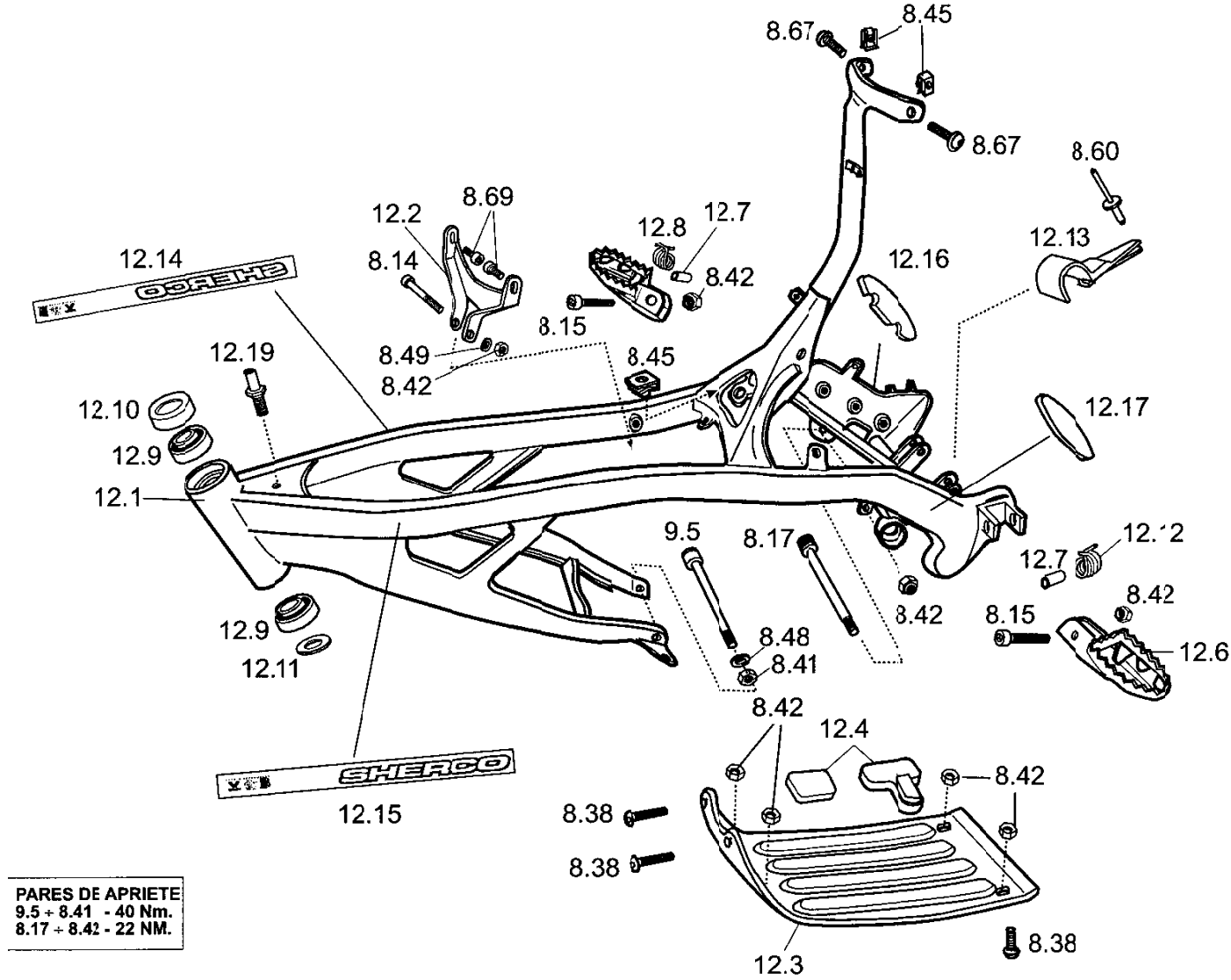
PARES APRIETE			
TONILLO M5-8 Nm	TORNILLO M6-12 Nm	TORNILLO M8-22Nm	TORNILLO M10-50 Nm

SHERCO

TORNILLERIA ESPECIAL 9

REFERENCIAS					ESPAÑOL	ENGLISH	FRANCAIS
PAGE	21	20	215	218			
9.1				M290	ESPARRAGO CULATA 6X38	STUD CYLINDER HEAD 6x38	GOUJON DE CULASSE 6x38
9.2				M291	ESPARRAGO CILINDRO 8X46	STUD CYLINDER 8x46	GOUJON DE CILYNDRE 8x46
9.3				M293	TUERCA CUBO EMBRAGUE M16X125	HEX NUT CLUTCH M16x125	ECROU NOYAU EMB M16x125
9.4				M295	TUERCA 14X125	HEX NUT M14x125	ECROU 14x125
9.5				M296	TORNILLO MOTOR	FRONT PIN ENGINE	AXE MOTEUR AV

GRUPO 12



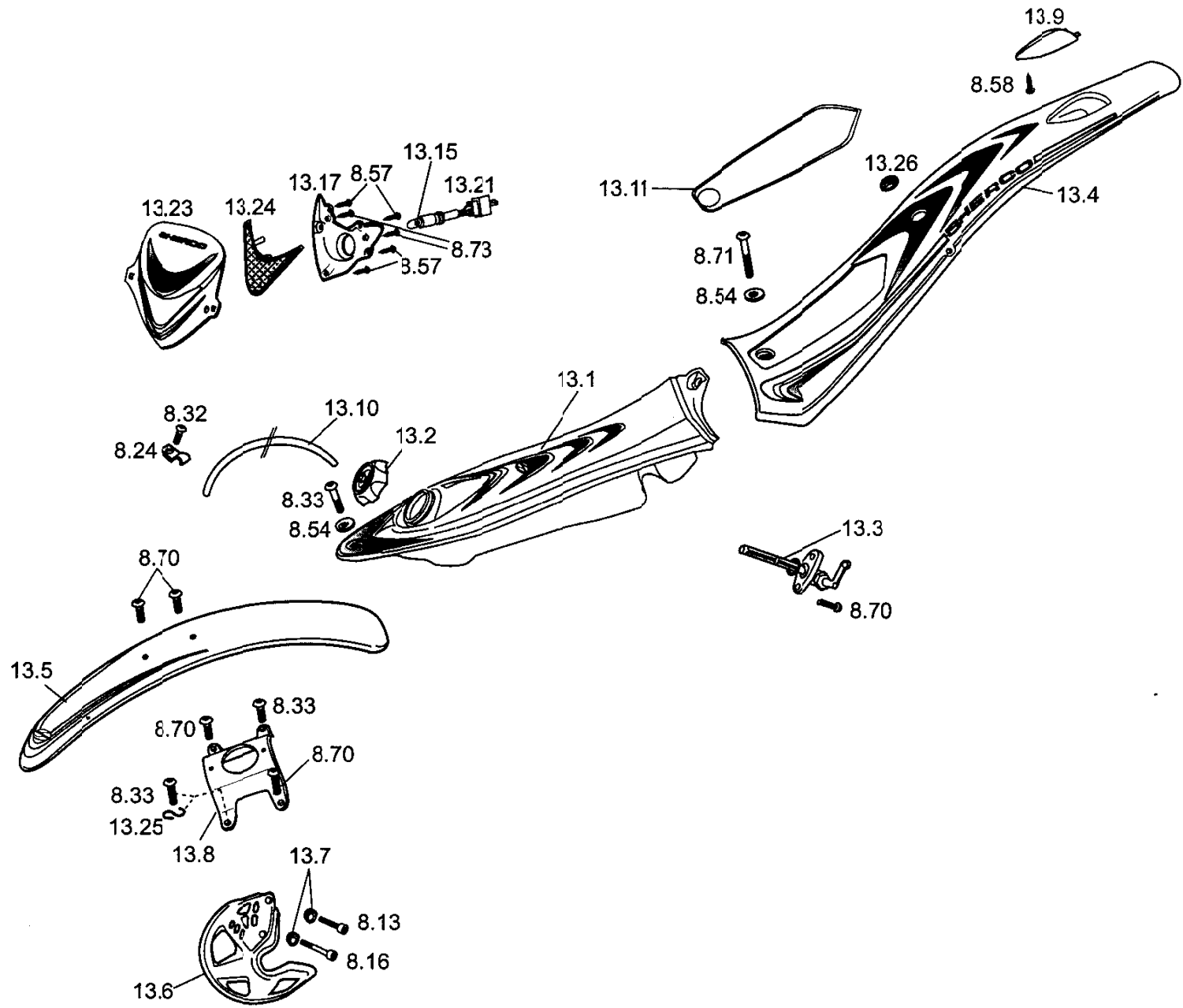


CHASIS

12

[illegible]

GRUPO 13



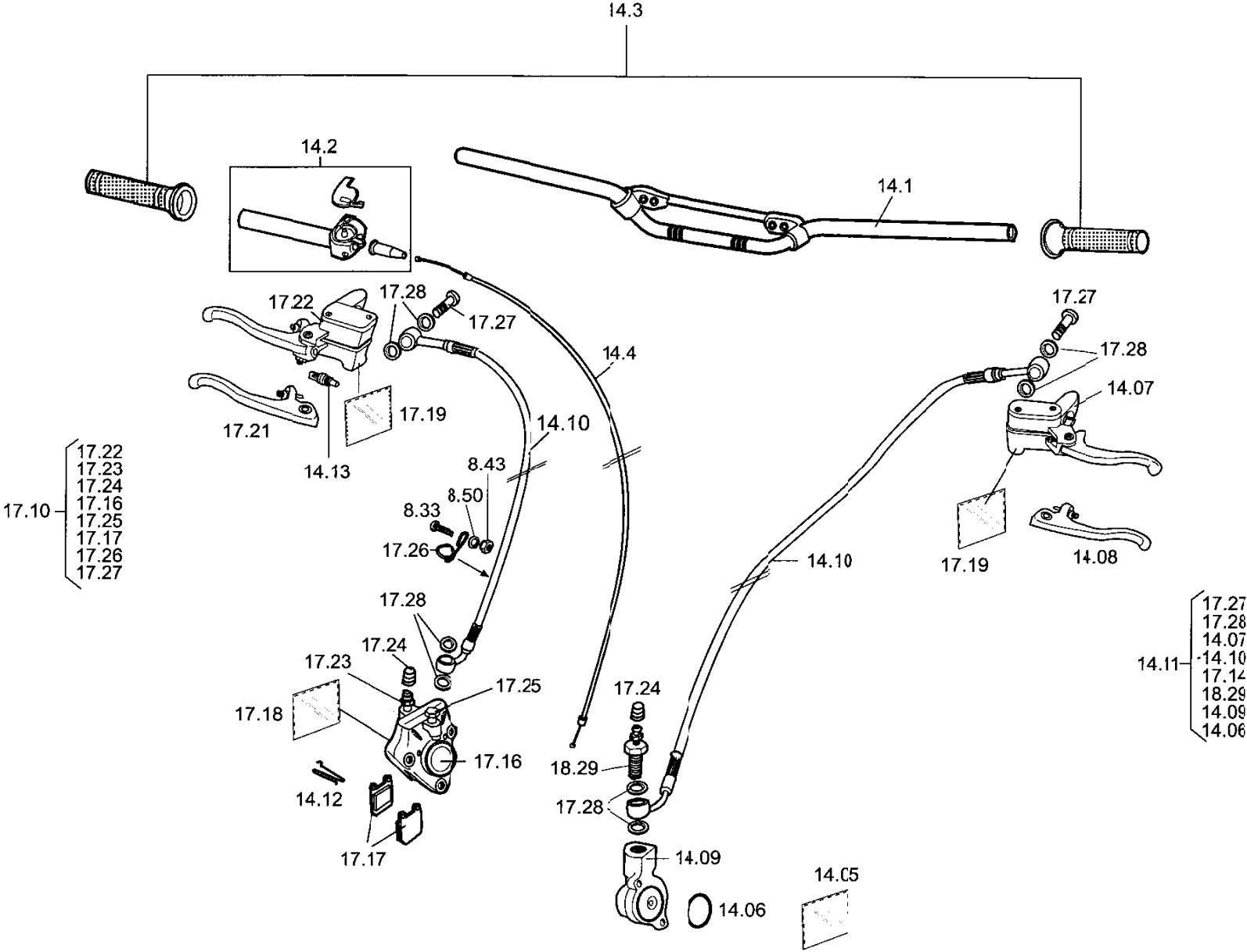


CARROCERIA

13

[illegible]

GRUPO 14



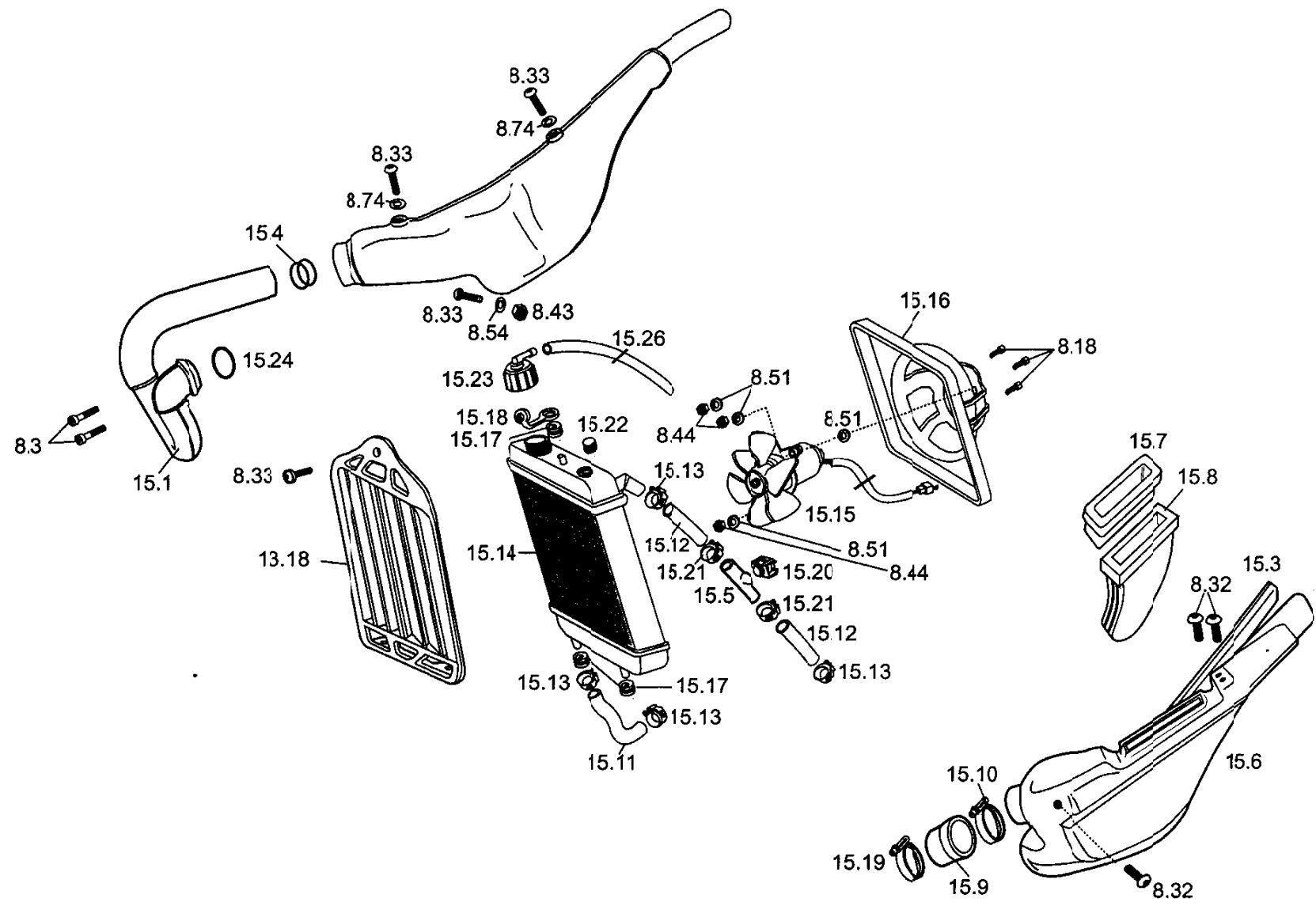


MANDOS

14

[illegible]

GRUPO 15

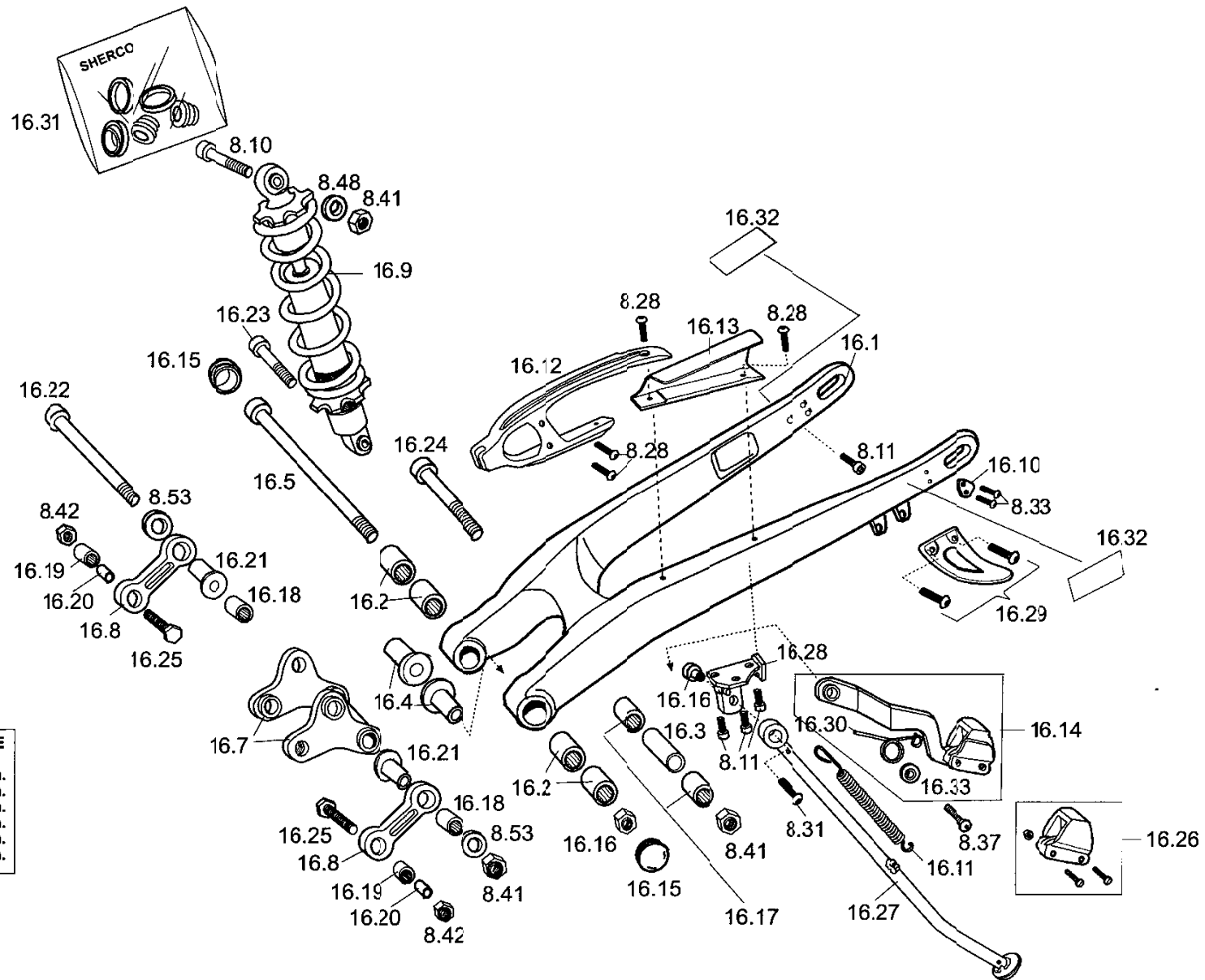




ESCAPE Y RADIADOR 15

[illegible]

GRUPO 16



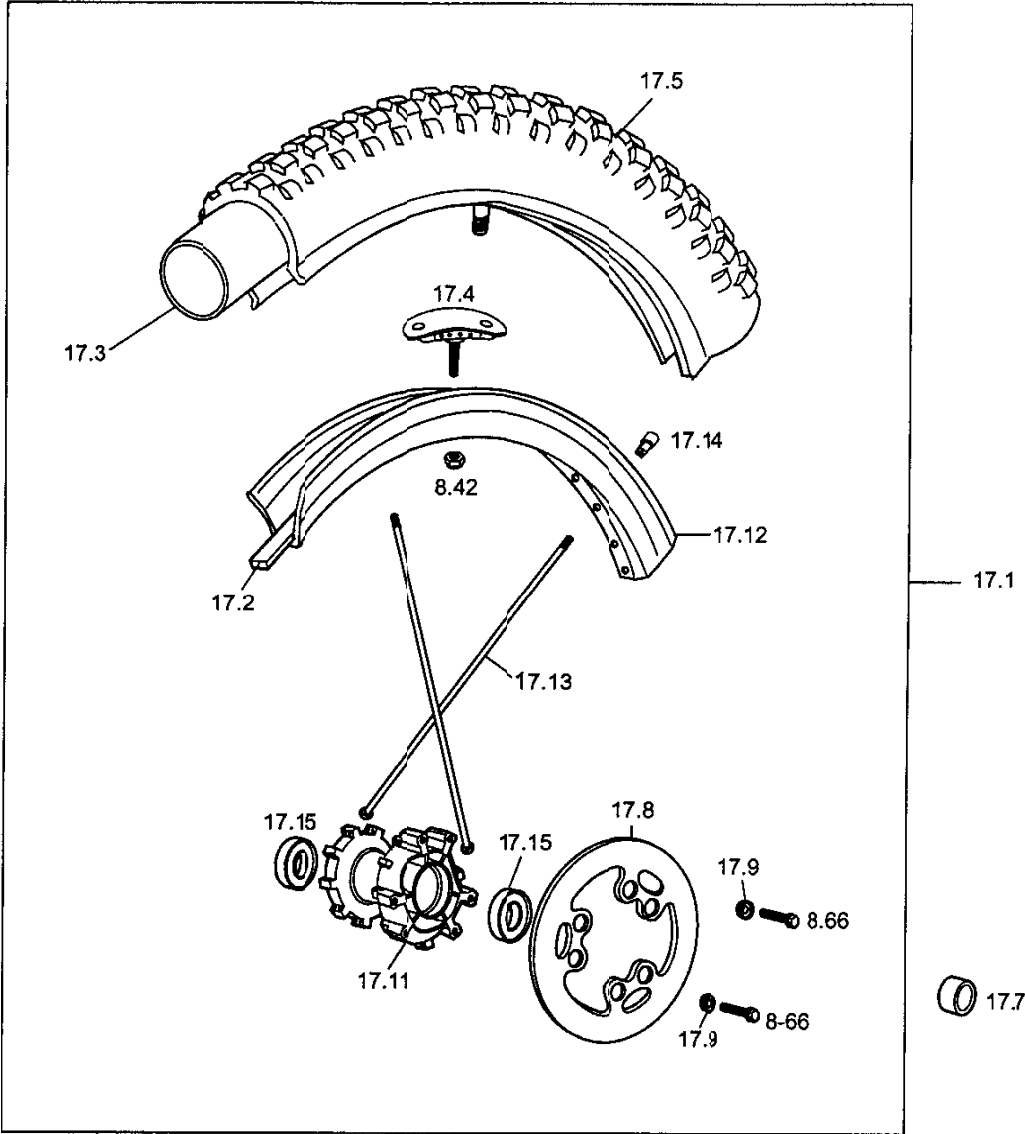
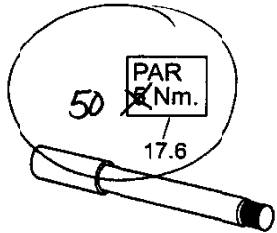


BASCULANTE

16

[illegible]

GRUPO 17

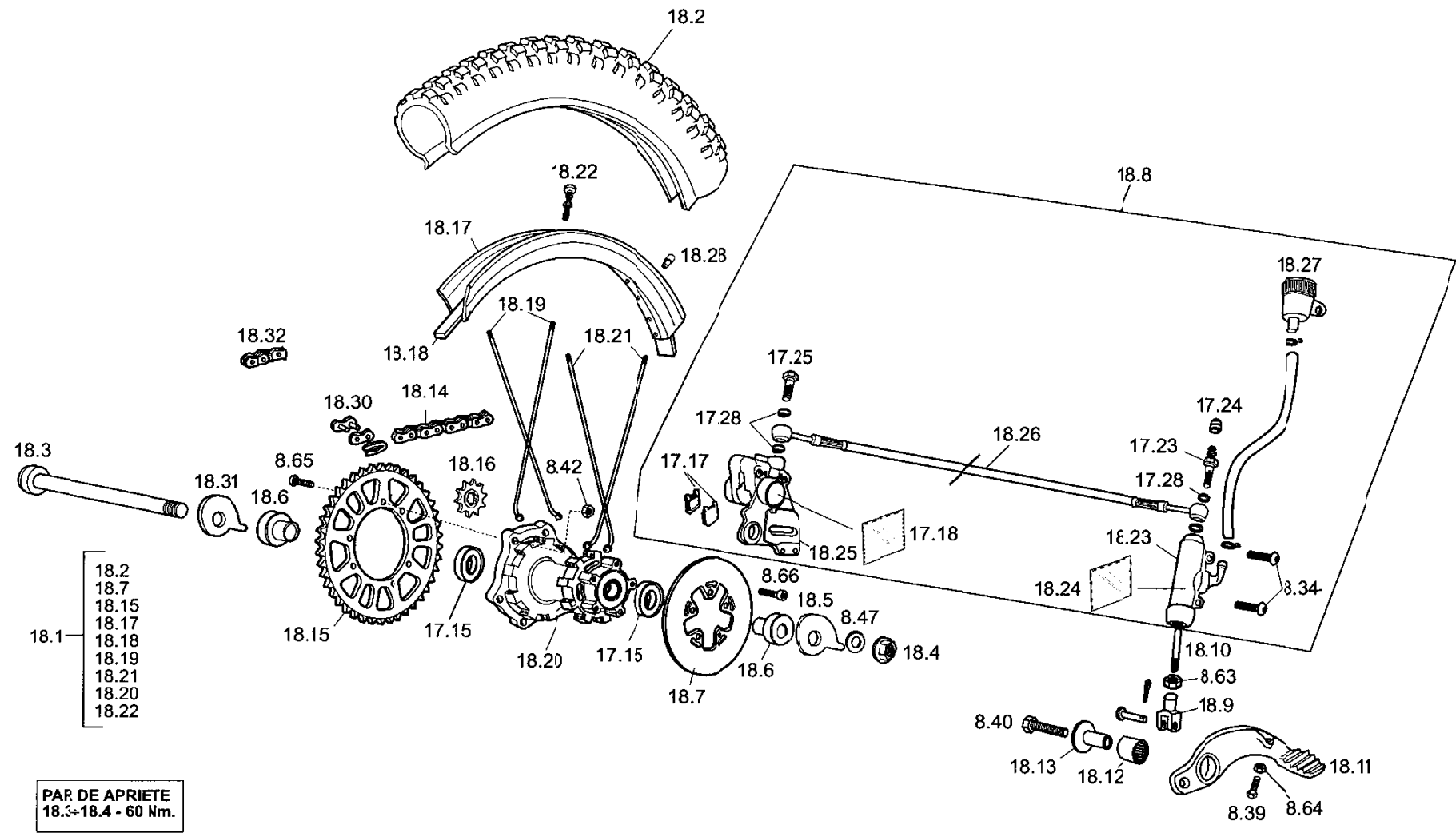




RUEDA DELANTERA 17

[illegible]

GRUPO 18

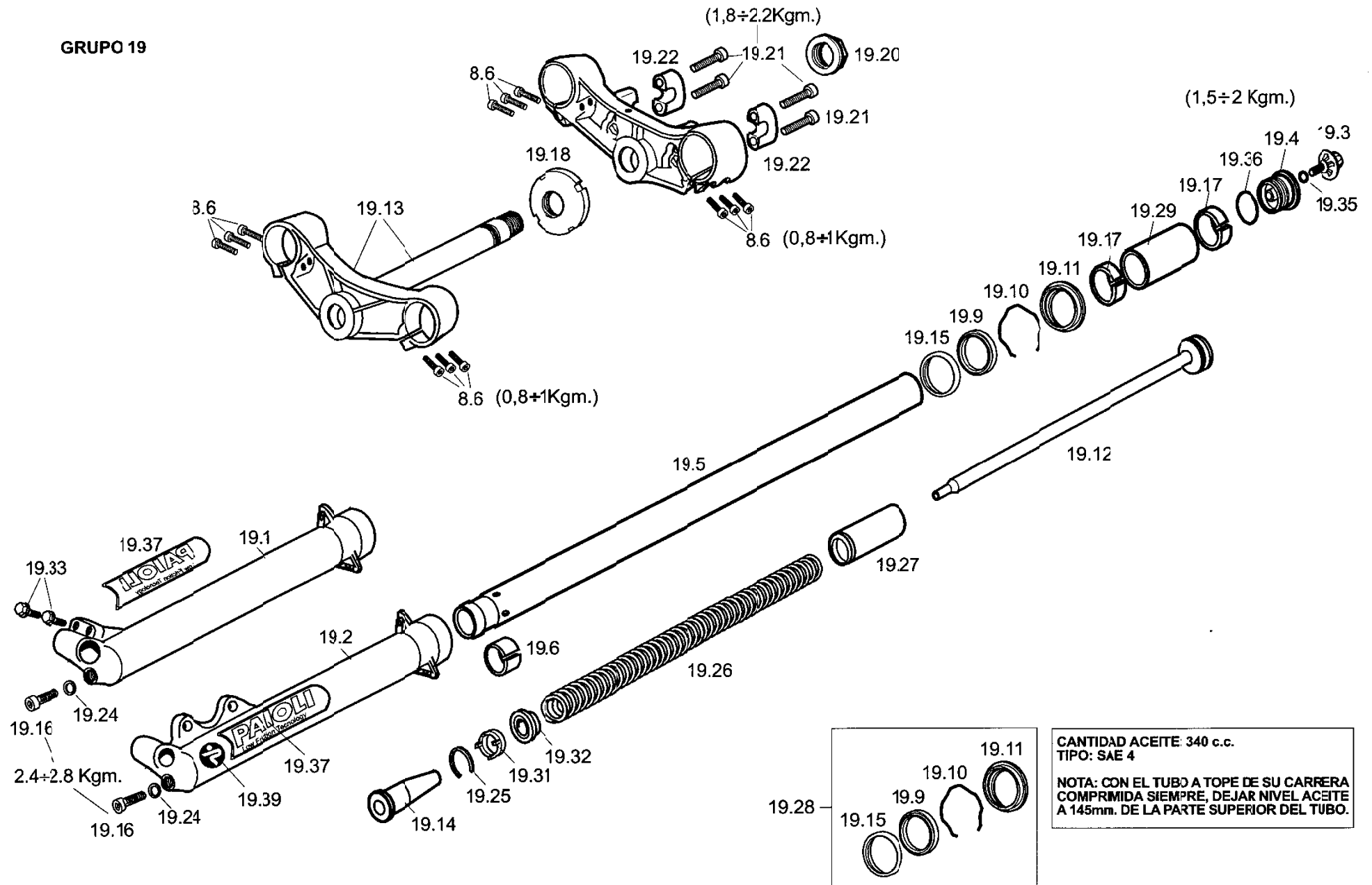




RUEDA TRASERA 18

[illegible]

GRUPO 19

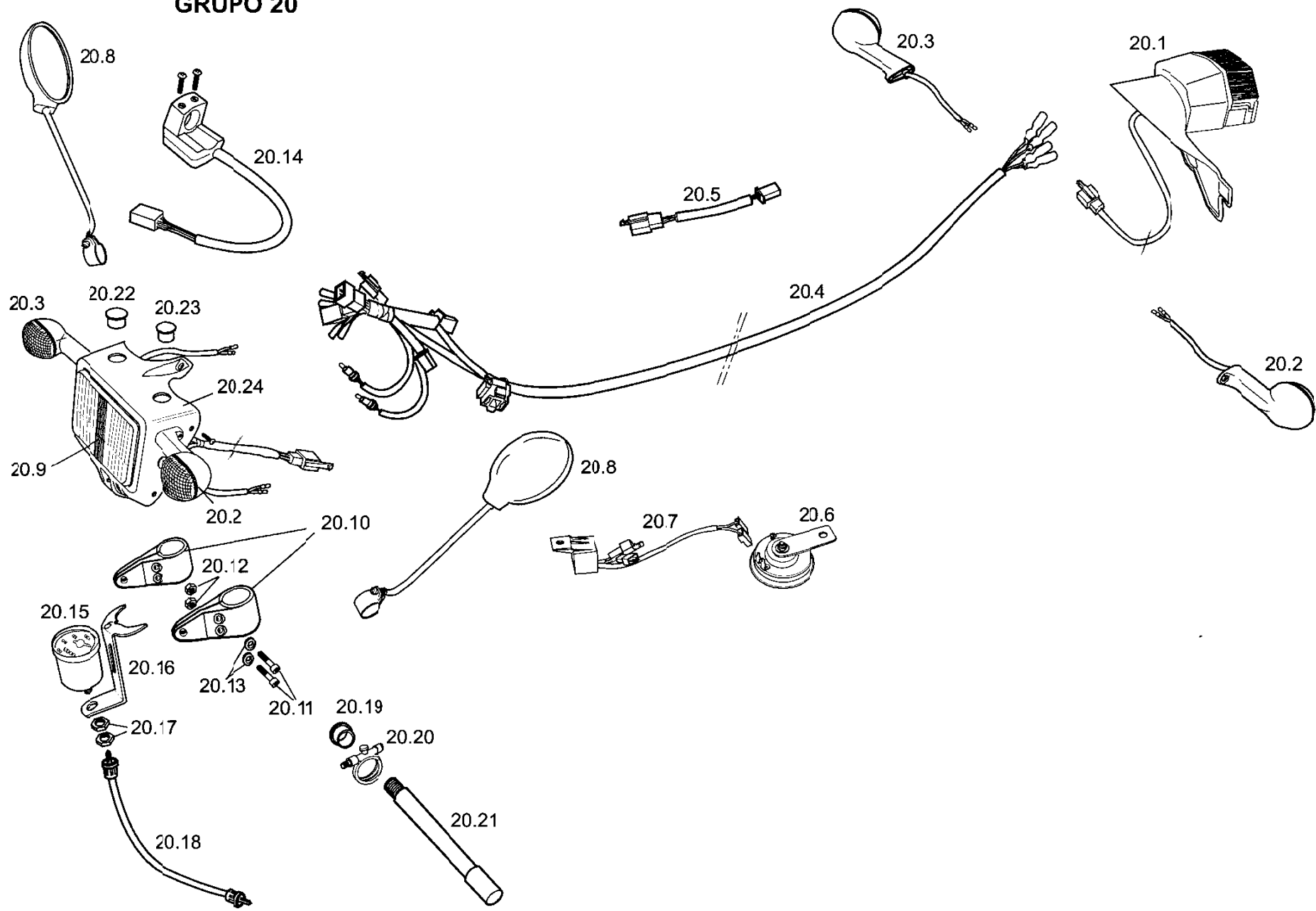




SUSPENSION DELANTERA 19

REFERENCIAS										
POS.	1.2	2.0	2.5	2.9	ESPAÑOL		ENGLISH		FRANÇAIS	
19.1				R105	BOTELLA DERECHA	949405920	FORK LEG (LEFT)		GROUPE JAMBE DROITE FOURCHE	
19.2				R104	BOTELLA IZQUIERDA	949417080	FORK LEG (RIGHT)		GROUPE JAMBE GAUCHE FOURCHE	
19.3				R222	TAPON AZUL	949512075	PLUG BLUE		BOUCHON BLEU	
19.4				R098	TAPON	949311583	PLUG		BOUCHON	
19.5				R099	BARRA D-I	949305526	FORK TUBE L-R		TUBE FOURCHE G-D	
19.6				R134	CASQUILLO DU	939514057	SPACER DU		ENTRETOIRE DU	
19.9				R070	RETEN.	929608012	FORK OIL SEAL		JOINT SPIE DE FOURCHE	
19.10				R113	CIRCLIP RETEN	949424013	CIRCLIPS OIL SEAL		CIRCLIP JOINT SPIE	
19.11				R096	GUARDAPOLVO	949421034	DUST SEAL		PARE POUSSIÈRE FOURCHE	
19.12				R106	CONJ. BOMBEO	949501512	PUMPING DEVICE COMPLETE		GROUPE CARTOUCHE	
19.13				R097	PLATINA INFERIOR CON EJE	949113750	BOTTOM PLATE		GROUPE T DE FOURCHE INFERIEUR	
19.14				R223	CONO	949510064	CONE		CONE	
19.15				R131	ARANDELA APOYO	949603667	WASHER FORK		RONDELLE APUJE	
19.16				R224	TORNILLO M10X30 DIN 912	919601395	BOLT M10X30		VIS CHC 10X30 FOURCHE	
19.17				R133	CASQUILLO DU BOTELLA	929514012	SPACER DU		DU JAMBE 2000	
19.18				R110	TUERCA DIRECCION	949126025	RING NUT		RONDELLE ECROU AXE DIRECTION	
19.19				R107	PLATINA SUPERIOR	949107510	UPPER PLATE		T DE FOURCHE SUPERIEUR	
19.20				R108	TUERCA SUPERIOR	949125051	NUT		ECROU SUPERIEUR	
19.21				R225	TORNILLO ALLEN M8X35 DIN912	919601375	BOLT M8X35		VIS CHC M8X35	
19.22				R109	BRIDA SUPERIOR MANILLAR	949121290	TOP BAR U-CLAMP		BRIDE GUIDON SUPERIEURE	
19.24				R226	ARANDELA 10X17X1.5	929603020	WASHER 10X17X1,5		RONDELLE 10X17X1,5 FOURCHE 2001	
19.25				R227	ANILLO ELASTICO	919615058	NUT		ANEAU ELASTIQUE	
19.26				R112	MUELLE	949508039	SPRING		RESSORT FOURCHE	
19.27				R111	TOPE MUELLE	949316226	BUSH (TOP)		ENTRETOISE RESSORT FOURCHE	
19.28				R071	KIT REPARACION RETEN.		FORK BUSH & SEAL KIT COMPLETE		GROUPE GARNITURE FOURCHE COMPLETE	
19.29				R132	SEPARADOR DU	949316222	SPACER DU		ENTRETOISE DU	
19.30				C302	SUSPENSION DELANTERA COMPLETA		FRONT FORK COMPLETE		FOURCHE CPL	
19.31				R228	VALVULA DE COMPRESION	949507034	PLASTIC COMPRESSION VALVE		VALVE DE COMPRESSION	
19.32				R135	APOYO MUELLE	949603772	COLLAR FOR SPRING		RONDELLE APPUI RESSORT 2000	
19.33				R229	TORNILLO HEXAG M6X30	949601500	BOLT M6X30		VIS M6X30 FOURCHE	
19.35				R230	TORICA CIERRE	919614057	O.RING		TORIQUE FOURCHE	
19.36				R231	TORICA TAPON	919614051	O.RING		TORIQUE BOUCHON BLEU	
19.37				C185	ADH PAIOLI JUEGO AZUL		PAIOLI BLUE STICKER PAIR 2001		ADESIF PAIOLI BLEU PAIRE 2001	
19.39				C186	PAIOLI REDONDO		PAIOLI LOGO STICKER		ADESIF LOGO PAIOLI RESINE	

GRUPO 20





KIT HOMOLOGACIÓN C.E.E 20

[illegible]